



Open lid to expose face of meter.

INTRODUCING YOUR NEW NEPTUNE WATER METER

Learn about its features and how to read your meter.

INTRODUCTION

Your new Neptune meter is a radio frequency unit that collects meter-usage data and transmits the data for collection. This data is transmitted to a Neptune mobile handheld device used by our meter readers.

FEATURES

1. The usage data logging capability provides up-to-the hour consumption data that is recorded as it happens, every hour on the hour. The leak indicator checks usage every 15-minutes in a 24-hour period.
2. This usage data logging information directly from the meter can be retrieved and ultimately provide a graphic chart (if necessary) showing daily or hourly consumption.
3. The chart will help identify existing or potential problems such as a possible leak and when the leak occurred.

BILLING QUESTIONS

480-488-6617 and 480-437-3582

WATER EMERGENCY 480-437-3581



LIGHT SENSOR

Recessed small hole (next to flashlight icon).

Supplies the power for the LCD panel (light activated).

On your LCD screen you may see the following icons.



FLOW INDICATOR

Shows the direction of flow through the meter.

- ON** Water in use
- OFF** Water not in use
- Flashing** Water is running slowly
- (-)** Reverse flow
- (+)** Forward flow



LEAK INDICATOR

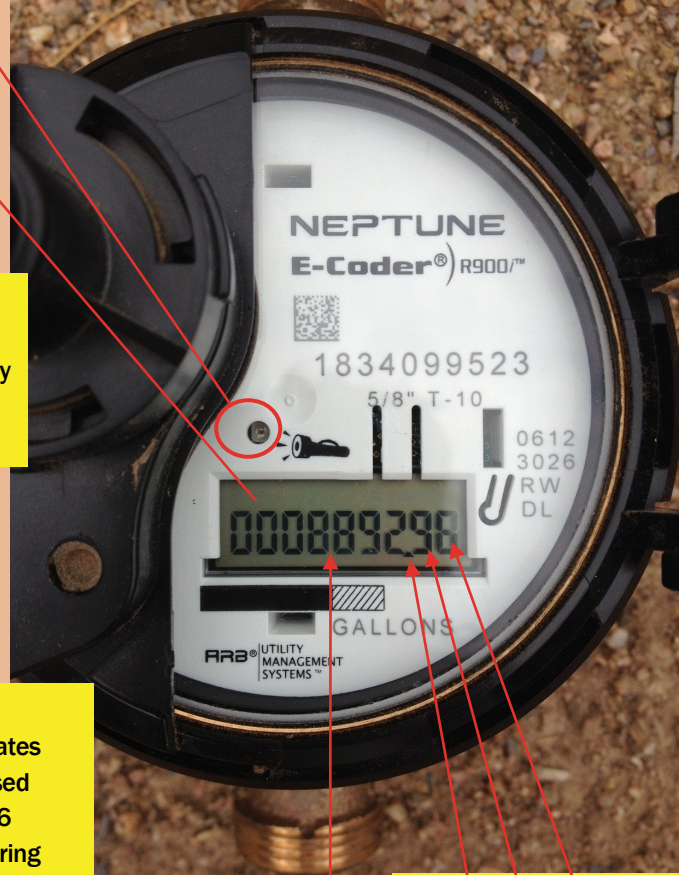
Displays a possible leak.

- OFF** No leak indicated
- Flashing** Intermittent leak indicates that water has been used for at least 50 of the 96 15-minute intervals during a 24-hour period
- On Continuously** Indicates water use for all 96 15-minute intervals during a 24-hour period

RATE

RATE OF FLOW

Average flow rate is displayed every 6 seconds on LCD display.



000889296

LCD DISPLAY

Nine digit LCD displays the meter reading in billing units of gallons.

Read is followed by a decimal point
Then a number that is 10 ths of a gallon
Then a number that is 100 ths of a gallon

How to read your meter

The read in the photo is 8,892.96 gallons